



THE GENERAL

BRISTOL

Floorplan – Plot 04-15

2 bedroom and study apartment

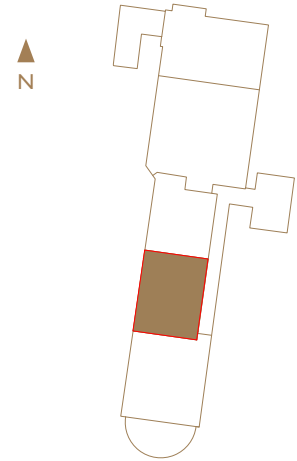
First and Mezzanine Floor

Total area 1180sq ft (109.6sq m)

Living/Dining	21ft 8in x 14ft 5in	(6.6m x 4.4m)
Kitchen	11ft 2in x 8ft 2in	(3.4m x 2.5m)
Bedroom 1	30ft 6in x 13ft 5in	(9.3m x 4.1m)
Bedroom 2	14ft 1in x 8ft 6in	(4.3m x 2.6m)
Study/ Dressing	15ft 6in x 15ft 5in	(4.7m x 2.5m)



First Floor Mezzanine



First Floor

01174 539 549
sales@cityandcountry.co.uk
www.cityandcountry.co.uk

CITY & COUNTRY