



THE GENERAL BRISTOL

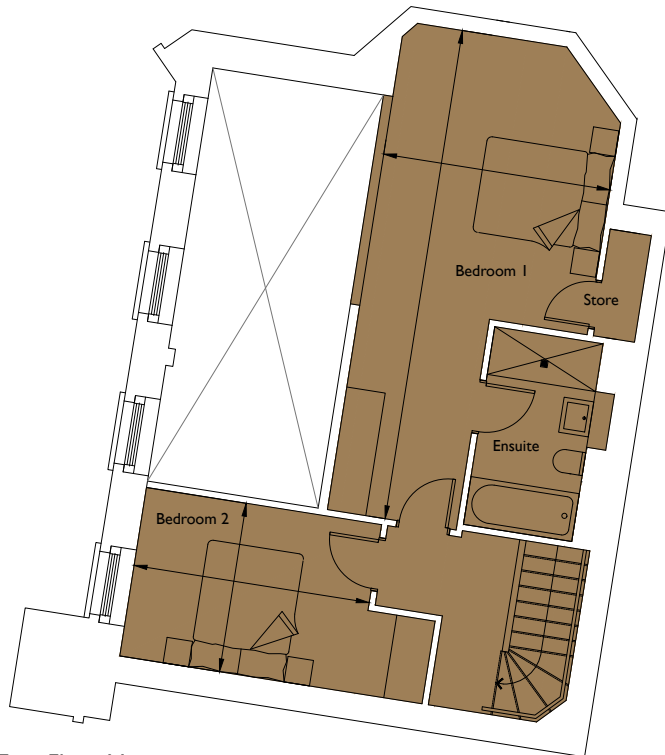
Floorplan – Plot 04-14

2 bedroom apartment

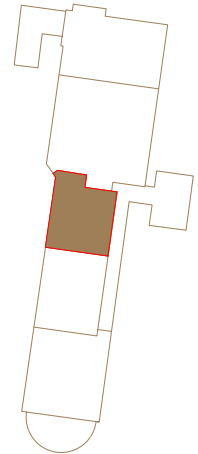
First and Mezzanine Floor

Total area 1156sq ft (107.4sq m)

Living/Dining	30ft 6in x 12ft 6in	(9.3m x 3.8m)
Kitchen	9ft 6in x 7ft 7in	(2.9m x 2.3m)
Bedroom 1	25ft 3in x 11ft 10in	(7.7m x 3.6m)
Bedroom 2	8ft 6in x 12ft 2in	(2.6m x 3.7m)



First Floor Mezzanine



First Floor

01174 539 549
sales@cityandcountry.co.uk
www.cityandcountry.co.uk

CITY & COUNTRY