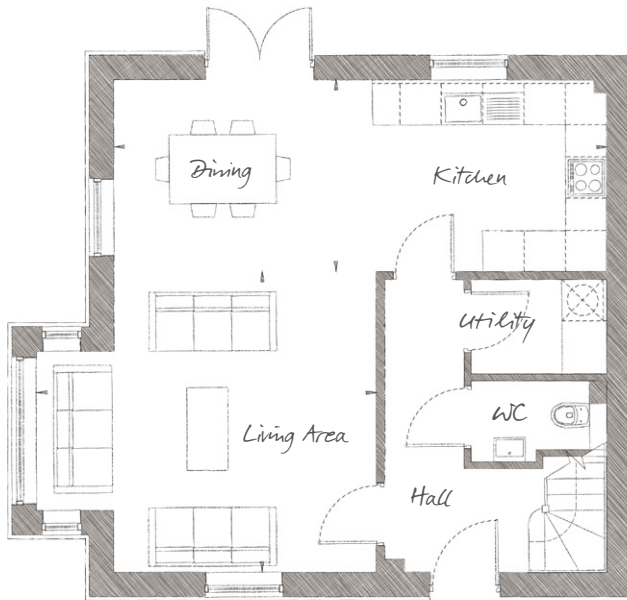


# THE NASSAU

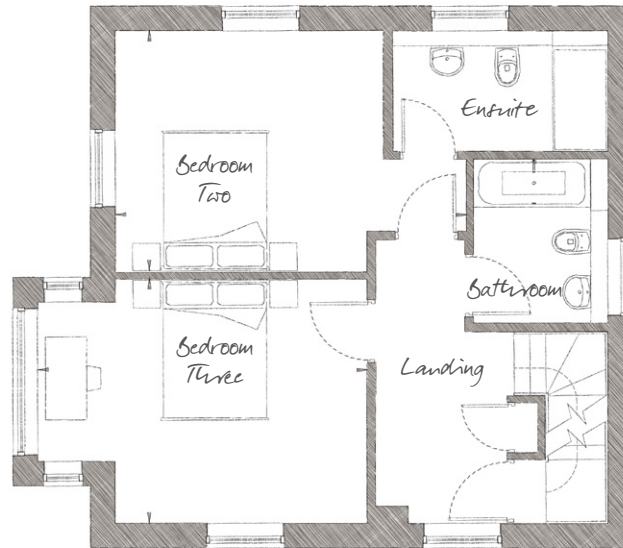
THREE BEDROOM, SEMI/DETACHED HOUSE | 1,523 SQ FT (141.5 SQ M)

PLOTS 2, 5, 20, 25, 42



## GROUND FLOOR

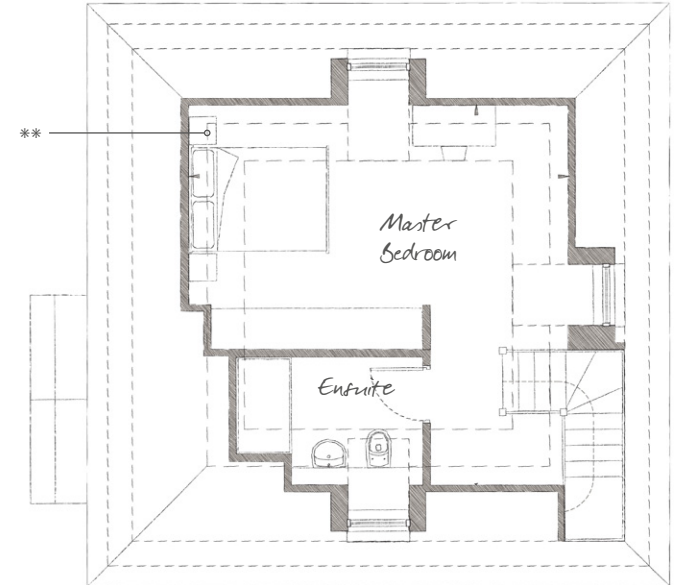
Living 16'3" x 14'5" (4.96m x 4.40m)  
 Kitchen / Dining 23'7" x 9'2" (7.20m x 2.80m)



## FIRST FLOOR

Bedroom Two 11'5" x 16'8" (5.10m x 3.50m)  
 Bedroom Three 15'9" x 11'8" (4.80m x 3.57m)

Plots 2, 5 and 25 are 1,513 sq ft (GIA) 1,443 sq ft (NSA), semi detached and therefore do not have a window in the family bathroom. Plot 20 is 1,523 sqft (GIA) 1,457 sq ft (NSA) and detached. Plot 42 is 1,525 sqft (GIA) 1,460 (NSA) and semi detached. \*Bathroom window to plot 20 only. Ask our Sales Executives for further information.



## SECOND FLOOR

Master Bedroom 18'3" x 18'3" (5.55m x 5.55m)



01255 388612  
[stosythpriority@cityandcountry.co.uk](mailto:stosythpriority@cityandcountry.co.uk) | [cityandcountry.co.uk](http://cityandcountry.co.uk)

