

THE  
**PLAYFAIR**

AT DONALDSON'S



**SIGNATURE**  
COLLECTION

---

*Apartment F17*

Two bedroom apartment

SIGNATURE  
COLLECTION

THE  
**PLAYFAIR**  
AT DONALDSON'S

*Apartment F17*

**An elegant two-bedroom apartment with views over the beautifully restored historic chapel**

With lofty ceilings and tall windows, this superb first floor apartment is filled with natural light. When the sun sets, the spacious living area becomes a cosy sanctuary ideal for settling down in the evening.

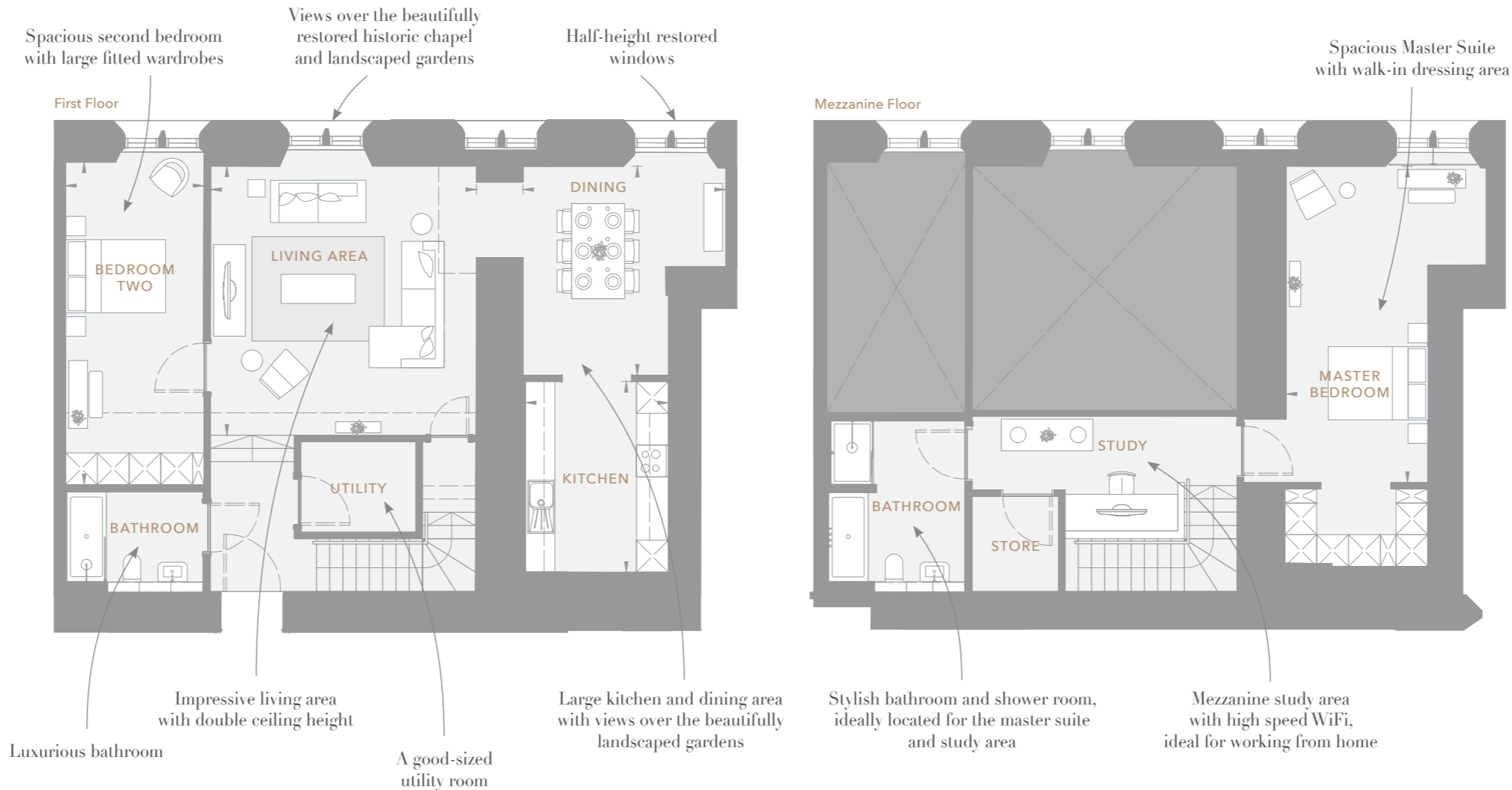
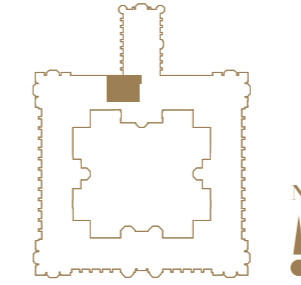
The separate contemporary linear kitchen from Ballerina includes integrated Siemens appliances as well as Corian worktops for a stylish finish. The dining area is perfect for enjoying the company of family and friends with half-height restored windows provide you with views of the beautifully restored chapel and landscaped gardens. A generously-sized guest bedroom, luxurious bathroom and utility room complete this floor, with the entire mezzanine floor above dedicated to the master suite.

The spacious master bedroom features a walk-in dressing area and an en-suite bathroom with both a bath and a shower, contemporary porcelain tiles to walls and floors as well as sanitaryware from Villeroy and Boch. The mezzanine landing provides a designated study area, which offers the ideal environment for those who work from home, as well as a store room.

**Dimensions**

Total NSA 1541 sq ft (143.2 sq m)

Living	16' 8" x 16' 5"	(5.08m x 5.01m)
Dining	15' 5" x 12' 11"	(4.71m x 3.94m)
Kitchen	11' 9" x 8' 10"	(3.60m x 2.69m)
Master Bedroom	20' 0" x 8' 7"	(6.11m x 2.61m)
Bedroom 2	19' 7" x 8' 9"	(5.97m x 2.67m)



Photography shown may be of similar apartments at Donaldson's and is indicative only



The information in this document is intended as a guide only and is subject to change without prior notice. Accordingly, due to the City & Country policy of continual improvement, the finished product may vary from the information provided and City & Country reserves the right to amend the specification. Photography shown may be of similar apartments at Donaldson's and is indicative only. All dimensions stated are approximate only with maximum dimensions and may alter through the construction phase and with interior finishes. You are therefore advised not to order any carpets, appliances or other goods which depend upon accurate dimensions before carrying out a check measure within your reserved property.