

SIGNATURE
COLLECTION

Apartments C02 & C05

A stylish three bedroom apartment within the magnificently restored chapel

Situated over three floors, this beautiful chapel apartment offers spectacular views onto Donaldson's impeccably restored landscaped gardens. The large open plan living and dining area features beautifully restored stained glass windows and exquisite decorative detailing to its high ceiling.

The double-height kitchen area is bathed in light. The spacious master bedroom features a luxurious en suite, fitted wardrobes and study area. The generous second bedroom is located on the mezzanine, with large elegant en suite and fitted wardrobes. The third bedroom benefits from a stylish bathroom adjacent. The bedrooms retain many original period features, including restored Wainscot panelling.

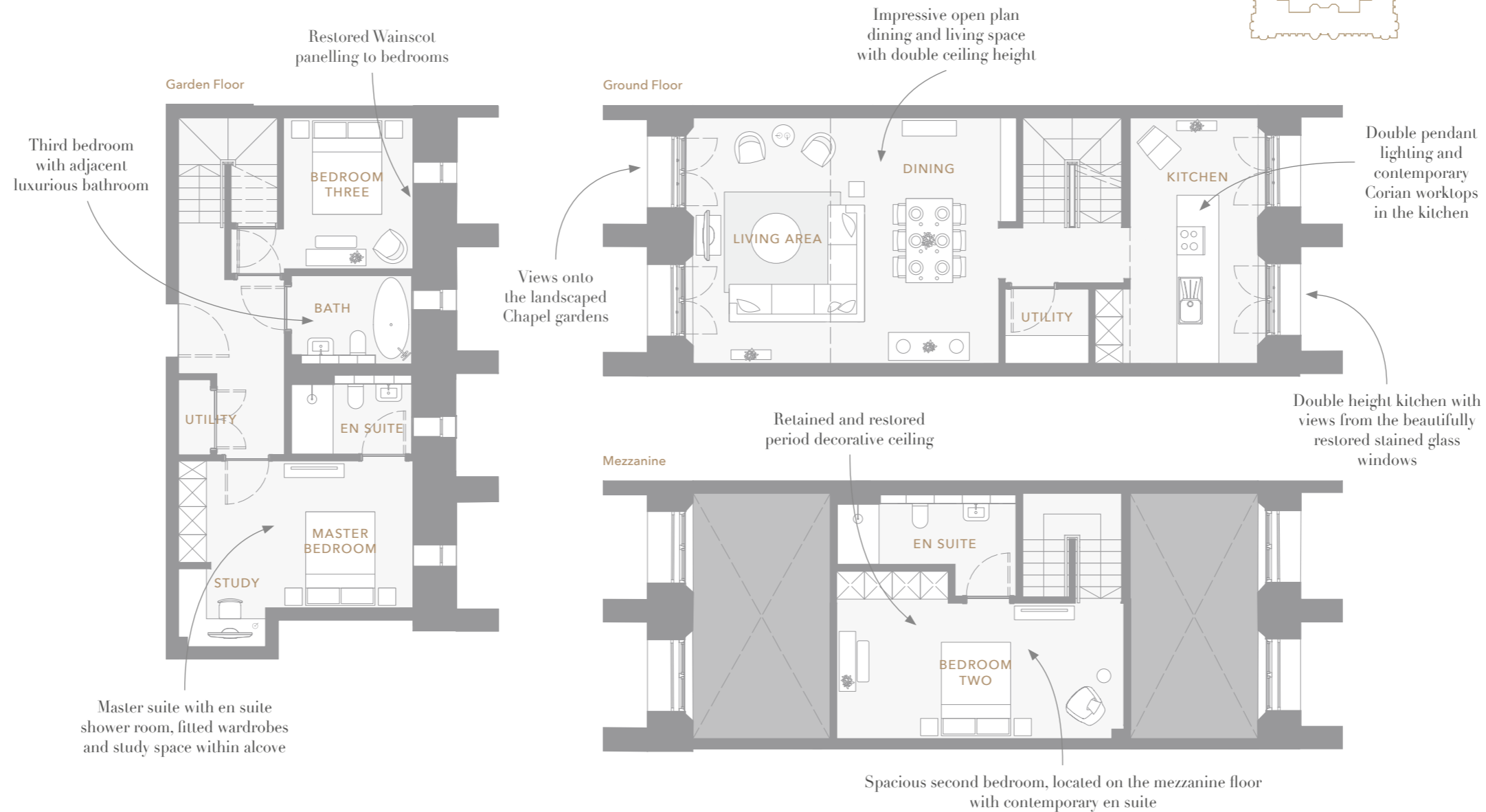
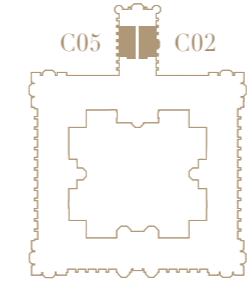
Dimensions

Total NSA 1,643 sq ft (152.6 sq m)

Living / Dining	22' 9" x 17' 3"	(6.94m x 5.26m)
Kitchen	8' 11" x 17' 3"	(2.74m x 5.26m)
Master Bedroom	16' 6" x 10' 4"	(3.23m x 2.78m)
Bedroom 2	20' 3" x 9' 7"	(6.16m x 2.91m)
Bedroom 3	10' 7" x 9' 1"	(3.23m x 2.78m)

THE
PLAYFAIR

AT DONALDSON'S



Floor plan shown is Apartment C02. Apartment C05 is handed and therefore room sizes, layout, furnishing/fittings and views may vary.

Photography shown is a combination of apartments C02, C05.