

# THE GENERAL

BRISTOL

THE  
NEW  
YARD

## Interior Finishes

The New Yard apartments benefit from a prime position, enjoying the historic and tranquil setting of The General, whilst being only a short walk from the city centre.

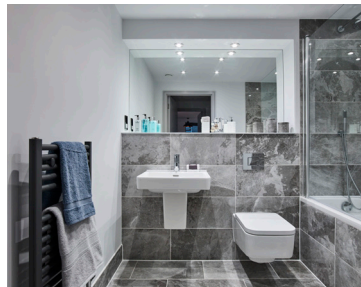
All apartments have a fully inclusive specification that includes: integrated kitchen appliances, stone worktops, fitted wardrobes (master bedroom), flooring throughout and tiling finishes.

This premium specification has been chosen to ensure the properties benefit from the best of contemporary, well considered design.



### Kitchens

- Contemporary handleless linear kitchens from Nobilia
- Stone worktops, splashbacks and upstands
- Single Neff oven and combi microwave\*
- Integrated Neff dishwashers and fridge/freezers
- Neff telescopic extractor hoods\*\*



### Bathrooms

- Polished marbled porcelain tiles to floors and walls
- Sanitaryware by Laufen
- Brassware from Crosswater
- Shower enclosures and screens by Simpsons - design varies by apartment
- Heated towel rails in anthracite finish



\*combi microwave to 2/3 bed properties

\*\*to most kitchens, please ask for specific details for your chosen property

## Flooring

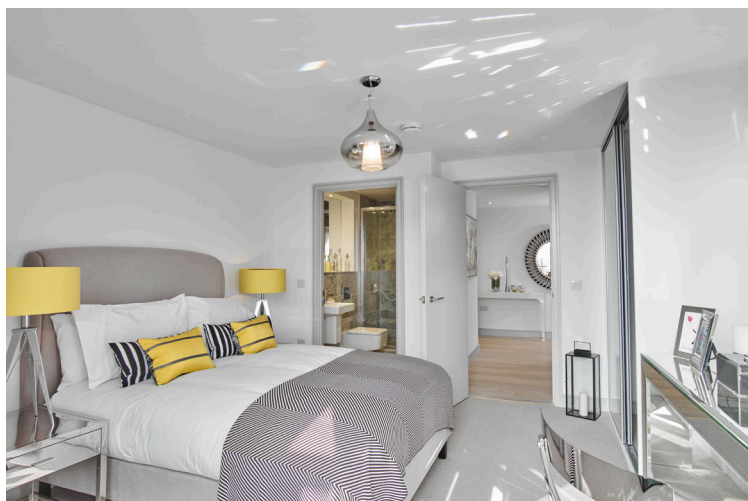
- Engineered oak flooring features in the main hallway, kitchen and most living areas\*
- 100% wool or non-wool carpets to bedrooms

## Heating

- Radiators powered by a communal heating system
- Individual room thermostats

## Wardrobes

- Luxury fitted wardrobes to all master bedrooms



## Electrical

- Combination of recessed downlighters and pendant light fittings throughout the property\*
- Ceiling pendants to all lounges, dining areas and bedrooms
- Internal cabling to allow for easy installation of digital and satellite television
- Communal satellite
- Telecom points fitted to living area and selected rooms
- Chrome shaver sockets



## Security

- All homes feature intruder alarms and mains pleaseroperated smoke detectors
- Video activated door entry to communal areas where applicable



## Communal Areas

- Retro style wall or ceiling lights
- Bespoke designed carpets
- Illustrated artwork commissioned for The General



\*please ask for specific details for your chosen property

**CONSUMER  
CODE FOR  
HOME BUILDERS**

[www.consumercode.co.uk](http://www.consumercode.co.uk)

**CITY & COUNTRY**

0117 92 55 333

[thegeneral@cityandcountry.co.uk](mailto:thegeneral@cityandcountry.co.uk) | [www.cityandcountry.co.uk](http://www.cityandcountry.co.uk)

Images are from the show home and are indicative of the quality of finish at The General. Please ask for more details. The information in this document is intended as a guide only and is subject to change without prior notice. Accordingly, due to the City & Country policy of continual improvement, the finished product may vary from the information provided and City & Country reserves the right to amend the specification. All dimensions stated are approximate only with maximum dimensions and may alter through the construction phase and with interior finishes. You are therefore advised not to order any carpets, appliances or other goods which depend upon accurate dimensions before carrying out a check measure within your reserved property.