

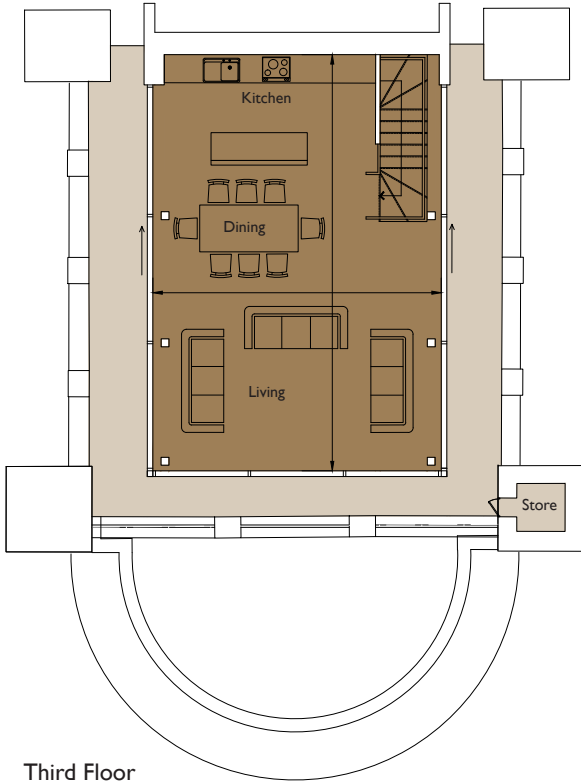


THE GENERAL BRISTOL

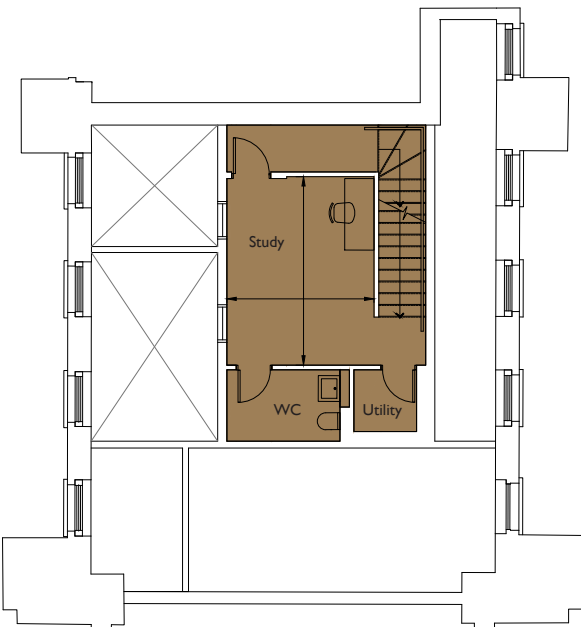
Floorplan – Plot 04-23

3 bedroom and study apartment
Second and Mezzanine, Third Floor
Total area 1819sq ft (169.0sq m)

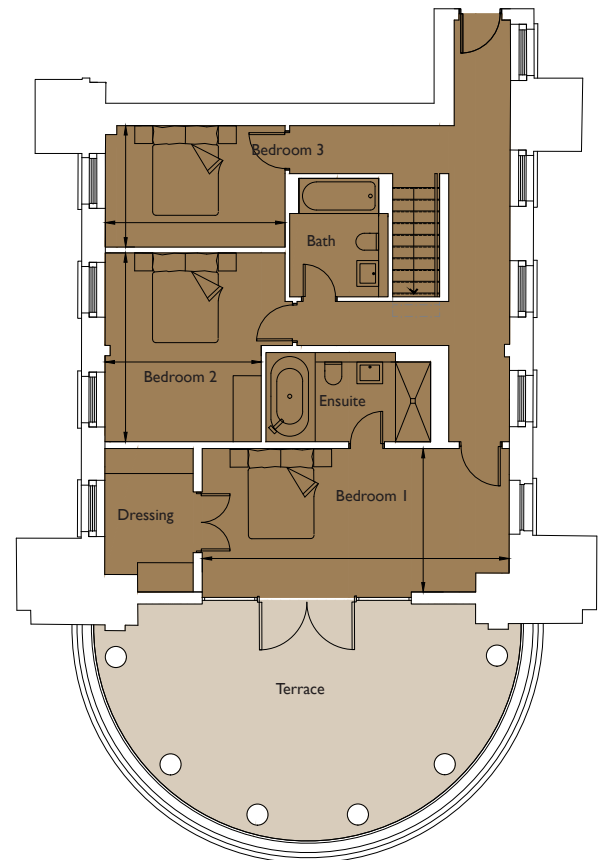
| | | |
|----------------|----------------------|---------------|
| Living/Dining/ | 29ft 2in x 20ft 0in | (8.9m x 6.1m) |
| Kitchen | | |
| Bedroom 1 | 21ft 4in x 10ft 2in | (6.5m x 3.1m) |
| Bedroom 2 | 13ft 2in x 10ft 10in | (4.0m x 3.3m) |
| Bedroom 3 | 12ft 6in x 8ft 6in | (3.8m x 2.6m) |
| Study | 13ft 2in x 10ft 2in | (4.0m x 3.1m) |



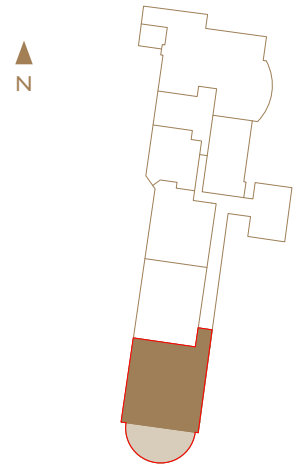
Third Floor



Second Floor



Second Floor Mezzanine



01179 255 333
sales@cityandcountry.co.uk
www.cityandcountry.co.uk

