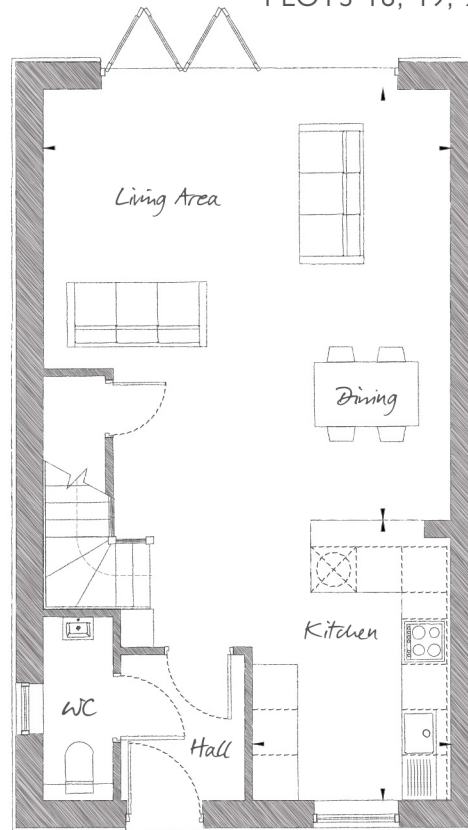


# THE SWALLOW

THREE BEDROOM, SEMI DETACHED/MID/END TERRACE HOUSE | 1,107 SQ FT (102.8 SQ M)

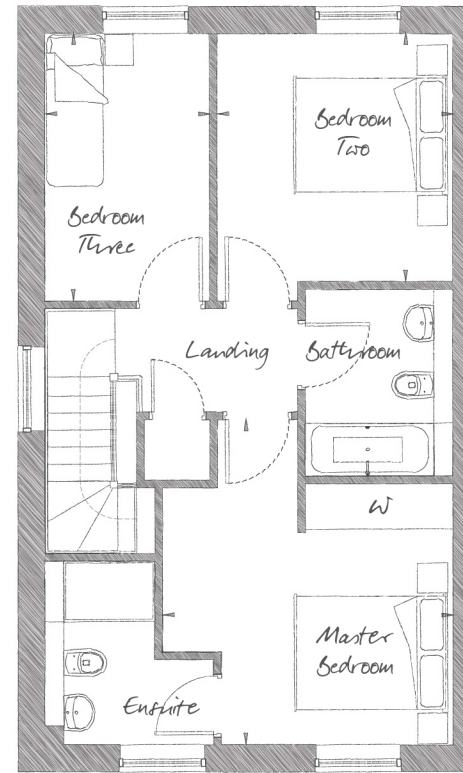
PLOTS 18, 19, 23, 24, 29, 30, 43, 44, 45, 47, 48



**GROUND FLOOR**

Living / Dining	18'10" x 17'9"	(5.73m x 5.42m)
Kitchen	12'3" x 8'7"	(3.74m x 2.62m)

Plots 18, 19, 23, 24, 29, 30, 47 and 48 are 1,107 sqft and semi detached. Plots 43 and 45 are 1,102 sqft and end terrace. Plot 44 is 1,104 sqft and mid terrace. In some cases, plots do not have a window to the downstairs WC and stairway. Ask our Sales Executives for further information.



**FIRST FLOOR**

Master Bedroom	14'3" x 12'7"	(4.33m x 3.84m)
Bedroom Two	10'10" x 10'2"	(3.30m x 3.10m)
Bedroom Three	11'8" x 7'3"	(3.56m x 2.20m)