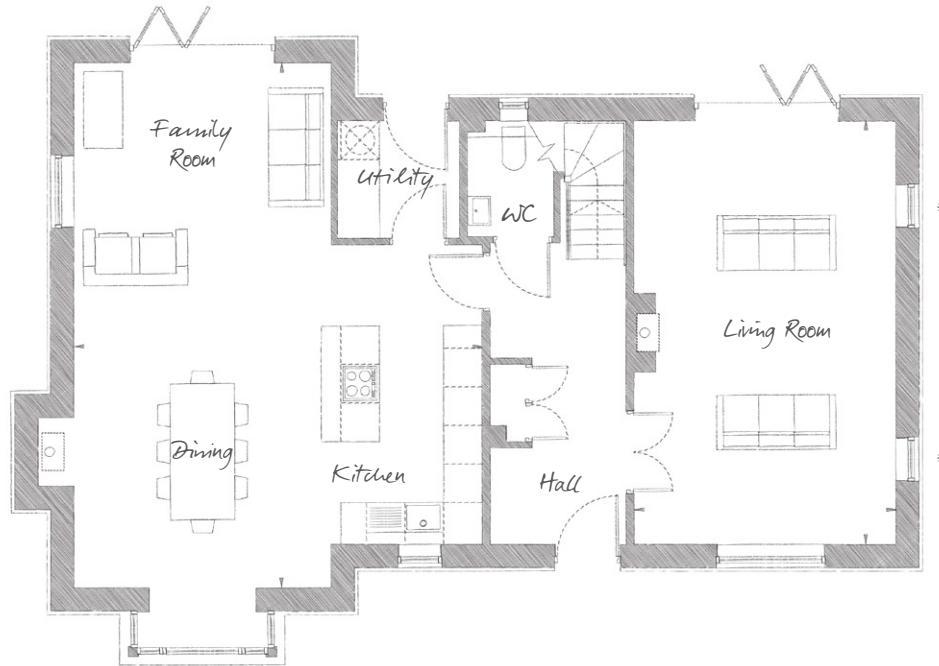


# THE OSYTH

FOUR BEDROOM, DETACHED HOUSE | 2,027 SQ FT (188.3 SQ M)

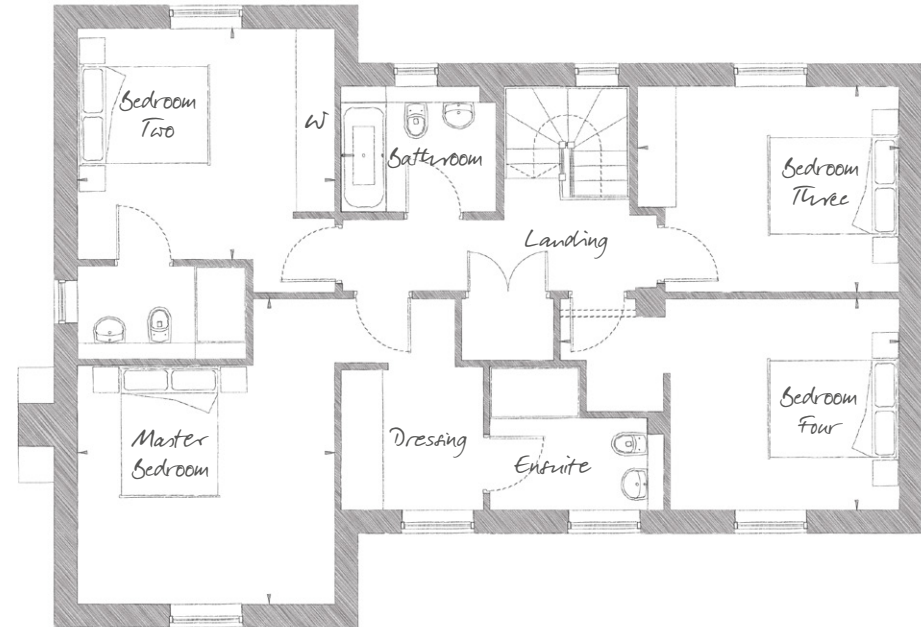
PLOTS 11, 12, 13, 14, 15



## GROUND FLOOR

Living Room 21'7" x 13'5" (6.60m x 4.09m)  
 Kitchen / Dining / Family 26'10" x 20'10" (8.20m x 6.37m)

\*Plots 13 and 14 do not have side windows in the living area.



## FIRST FLOOR

Master Bedroom 15'7" x 13'2" (4.77m x 4.02m)  
 Bedroom Two 13'2" x 11'10" (4.03m x 3.62m)  
 Bedroom Three 13'4" x 10'6" (4.10m x 3.22m)  
 Bedroom Four 17'4" x 10'10" (5.30m x 3.31m)



01255 388612  
 stosythpriory@cityandcountry.co.uk | cityandcountry.co.uk

