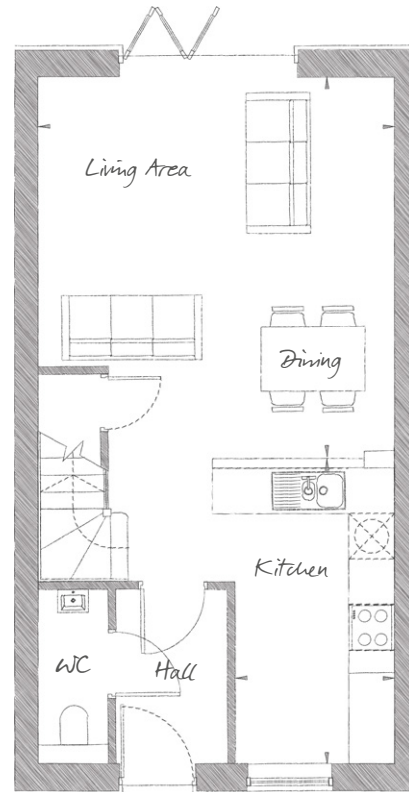


THE GREENFINCH

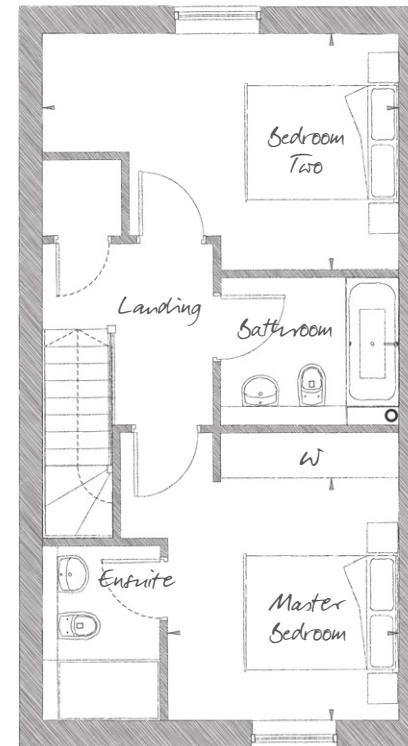
TWO BEDROOM, MID/END TERRACE HOUSE | 924 SQ FT (85 SQ M)

PLOTS 51-54, 56-62



GROUND FLOOR

Living / Dining 16'8" x 15'5" (5.07m x 4.70m)
 Kitchen 13'4" x 6'10" (4.06m x 2.09m)



FIRST FLOOR

Master Bedroom 10'7" x 10'0" (3.23m x 3.04m)
 Bedroom Two 13'5" x 10'4" (4.10m x 3.15m)

Plots 58 and 59 are end of terrace and therefore have additional windows.
 Ask our Sales Executives for further information.



01255 388612
 stosythpriory@cityandcountry.co.uk | cityandcountry.co.uk

