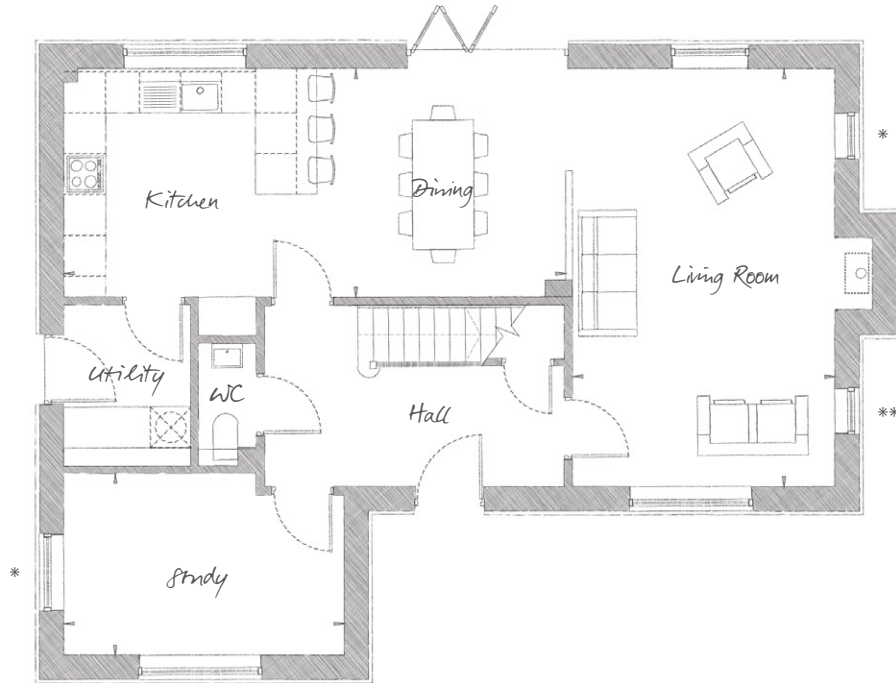


# THE ABBOT

FOUR BEDROOM, DETACHED HOUSE | 1,744 SQ FT (162 SQ M)

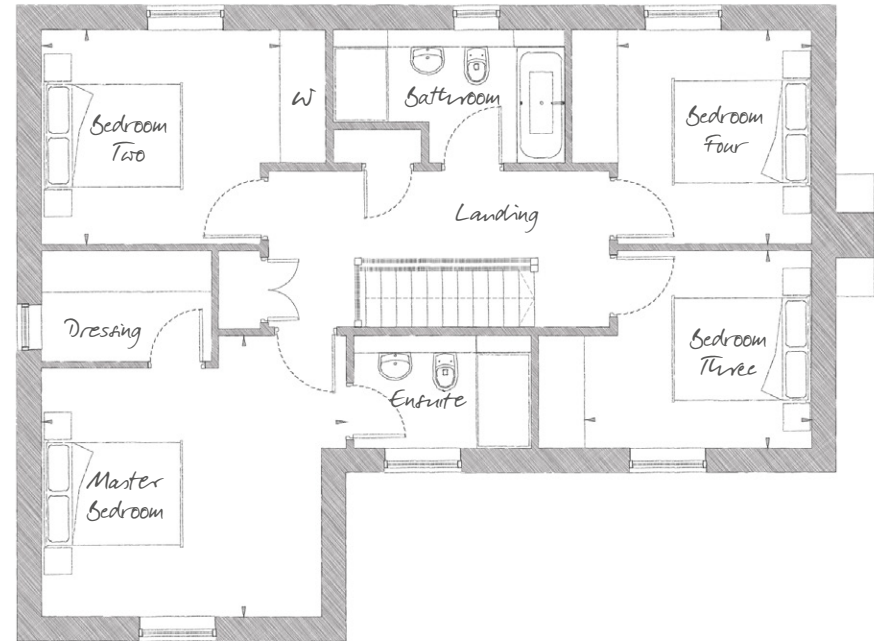
PLOTS 8, 10, 16, 17, 27, 28



**GROUND FLOOR**

Living Room	20' 1" x 12' 7"	(6.14m x 3.85m)
Kitchen / Dining	24' 1" x 10' 11"	(7.36m x 3.35m)
Study	13' 5" x 8' 9"	(4.10m x 2.68m)

Plots 8, 10, 16 and 17 are semi detached and therefore do not have a window in the family bathroom. \*Plots 27 and 28 do not have a side window in the living area and study. \*\*Plot 28 does not have second side window in living area. Ask our Sales Executives for further information.



**FIRST FLOOR**

Master Bedroom	14' 9" x 13' 7"	(4.50m x 4.16m)
Bedroom Two	11' 4" x 10' 3"	(3.46m x 3.14m)
Bedroom Three	10' 4" x 9' 5"	(3.17m x 2.88m)
Bedroom Four	11' 1" x 9' 7"	(3.37m x 2.92m)



01255 388612  
[stosytpriory@cityandcountry.co.uk](mailto:stosytpriory@cityandcountry.co.uk) | [cityandcountry.co.uk](http://cityandcountry.co.uk)

